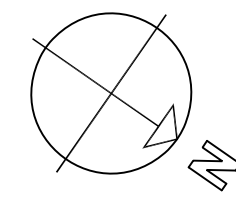


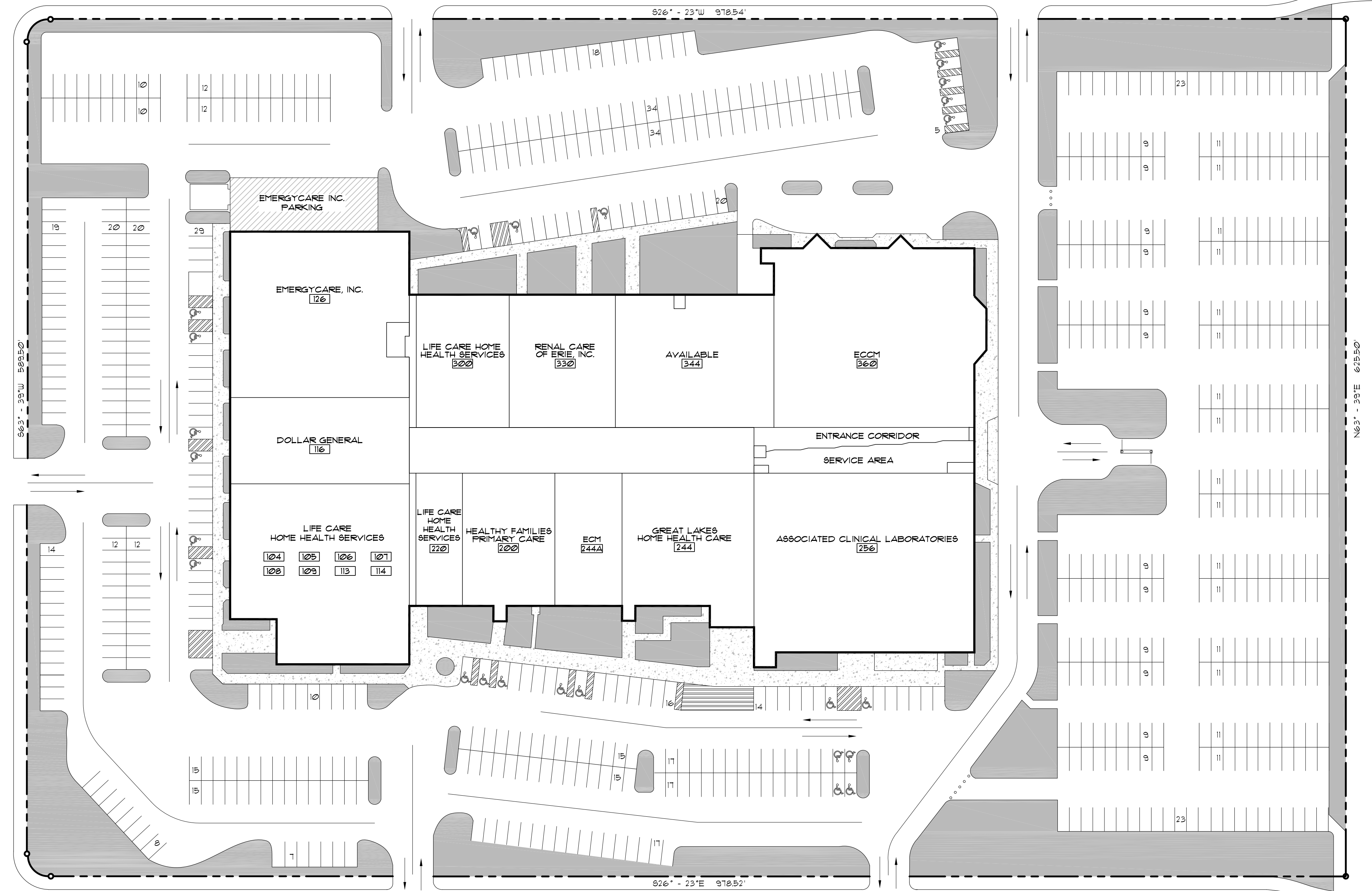
9/15/2014 9:57:16 AM K:\2006 PROJECTS\0662_NORTHGATE COMMONS\240_SITE PLAN\TENANT LEGEND_14_0912.DWG



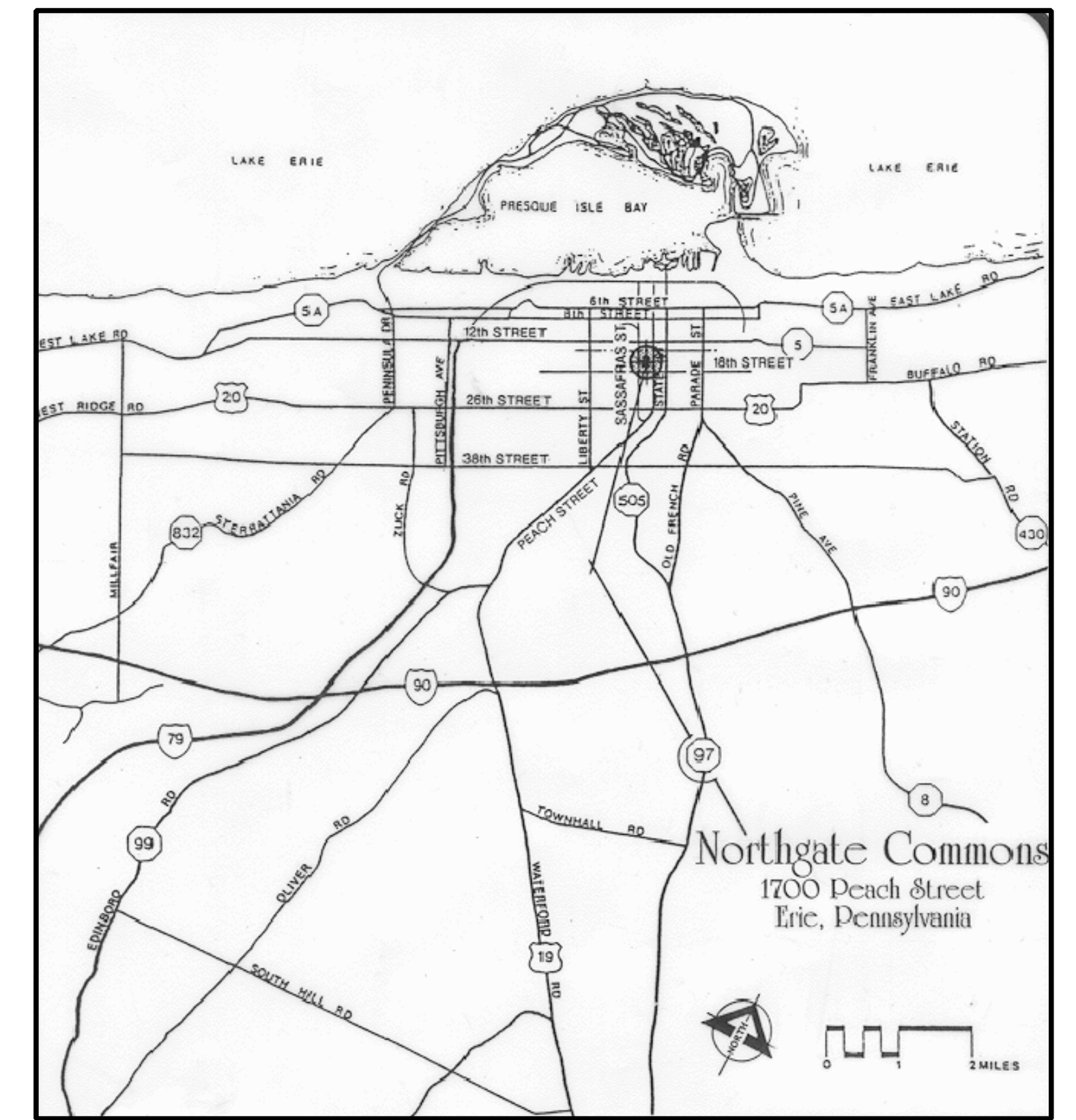
WEST 18TH STREET

SASSAFRAS STREET

PEACH STREET



H13 LOCATION MAP
NTS



TENANT SCHEDULE			
NO.	AREA	FRONT	TENANT
104	17,110 SQ. FT.	73'	LIFE CARE HOME HEALTH SERVICES
105	-- SQ. FT.	91.5'	LIFE CARE HOME HEALTH SERVICES
106	-- SQ. FT.	44'	LIFE CARE HOME HEALTH SERVICES
107	-- SQ. FT.	25.33'	LIFE CARE HOME HEALTH SERVICES
108	-- SQ. FT.	27'	LIFE CARE HOME HEALTH SERVICES
109	-- SQ. FT.	27.5'	LIFE CARE HOME HEALTH SERVICES
113	-- SQ. FT.	26'	LIFE CARE HOME HEALTH SERVICES
114	-- SQ. FT.	27.5'	LIFE CARE HOME HEALTH SERVICES
116	8,715 SQ. FT.	65'	DOLLAR GENERAL
126	16,949 SQ. FT.	135'	EMERGYCARE, INC.
200	6,980 SQ. FT.	69.67'	HEALTHY FAMILIES
220	3,459 SQ. FT.	35'	LIFE CARE HOME HEALTH SERVICES
244	10,500 SQ. FT.	100'	GREAT LAKES HOME HEALTH CARE
244A	5,000 SQ. FT.	50'	ERIE COUNTY CARE MANAGEMENT
256	46,301 SQ. FT.	166'	ASSOCIATED CLINICAL LABS
300	7,376 SQ. FT.	74.4'	LIFE CARE HOME HEALTH SERVICE
330	8,000 SQ. FT.	80'	RENAL CARE OF ERIE, INC.
344	11,350 SQ. FT.	119.5'	AVAILABLE
360	20,250 SQ. FT.	151'	ERIE COUNTY CARE MANAGEMENT

(* asterisk indicates subtenant.)

SITE DATA	
BUILDING AREA	: 181,720 SQ. FT.
LEASABLE AREA	: 161,145 SQ. FT.
SITE AREA	: 14.306 ACRES
PRIVATE TENANT PARKING	: 330 SPACES
PATRON PARKING	: 462 SPACES
TOTAL PARKING	: 792 SPACES

A1 SITE PLAN
NTS

A13 TENANT SCHEDULE
NTS

NORTHGATE COMMONS
BALDWIN BROTHERS, INC.
1700 PEACH STREET ERIE, PA
SITE PLAN

REVISION	
NO.	DESCRIPTION

DRAWN: ATN
CHECKED: RER
PROJECT NO.: 0662
ISSUED: 09/15/14

DRAWING NO.
SP100
© COPYRIGHT 2014

Bostwick Design Partnership
2631 West 6th Street Erie, PA 16505
814-838-7625
BOSTWICKDESIGN.COM

